



ALLS PROJECTS SHALL BE IN ACCORDANCE WITH THE CITY OF UTAH'S DESIGN STANDARDS SPECIFICATIONS FOR PUBLIC UTILITIES AND STRUCTURES.

URBAN

C.W.

THIS DRAWING SHALL BE USED ONLY FOR THE PROJECT AND SITE SPECIFICALLY IDENTIFIED IN THE TITLE. IT IS NOT TO BE REPRODUCED OR USED FOR ANY OTHER PROJECT WITHOUT THE WRITTEN PERMISSION OF THE ARCHITECT.

PROJECT: THE MABEL
 REVISIONS:
 323 S. 700 E. SOFT LAKE CITY, UTAH 84101

TITLE: FLOOR PLANS - END UNITS

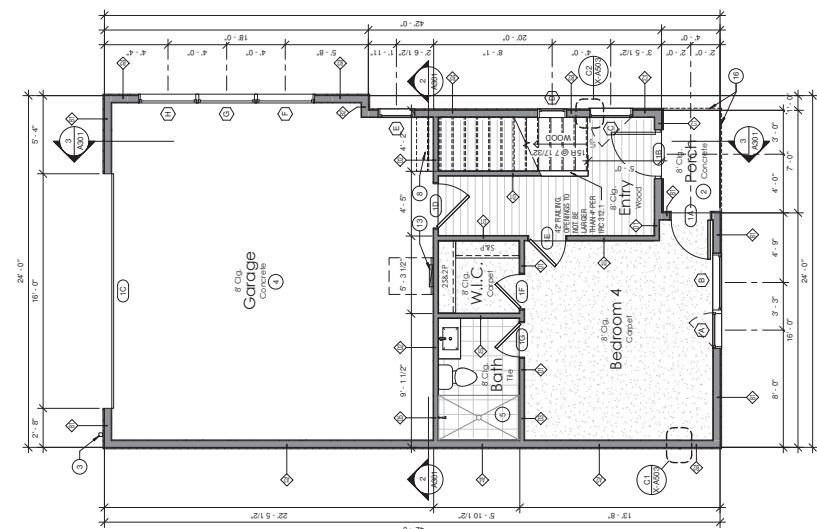
SHEET: A110

ISSUE DATE: 08/20/2017
 PD APPLICATION

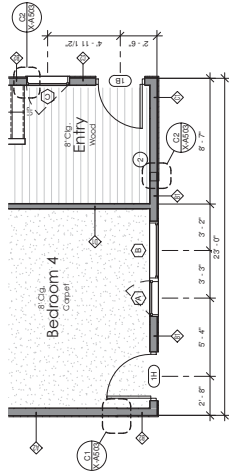
- GENERAL NOTES - FLOOR PLAN**
- 1. NO WINDOWS ARE ALLOWED IN SPECIFIED SPACES.
 - 2. UNITS SHOWN ARE TYPICAL BUILDING UNITS WITH WINDOW PLACEMENTS SHOWN. ANY VARIATIONS SHALL BE SHOWN AS VARIATIONS.
 - 3. ALL UNITS SHALL BE CONFORMANT WITH ALL APPLICABLE CODES AND REGULATIONS. EQUIPMENT AS REQUIRED.

FLOOR PLAN KEYNOTES

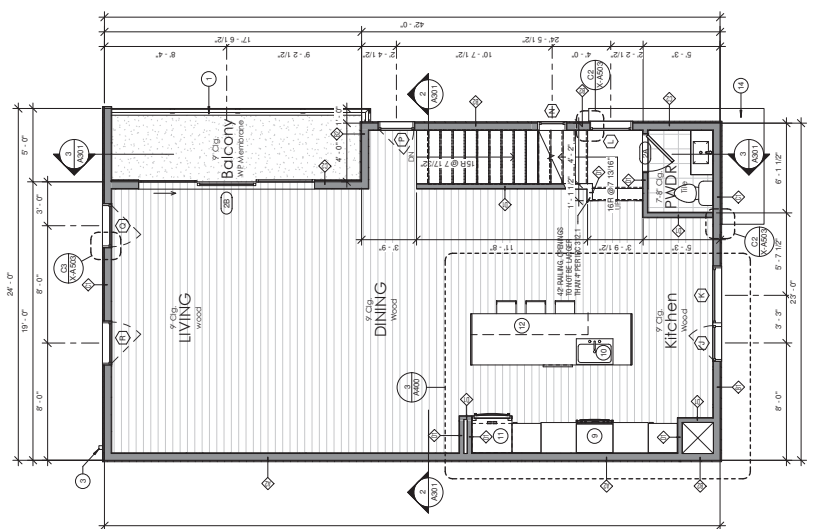
- 1. 3/4" gyp board per spec sheet
- 2. 1/2" gyp board on walls, and 2 layers of 5/8" gyp board on ceiling above
- 3. 1/2" gyp board on ceiling above
- 4. 1/2" gyp board on ceiling above
- 5. Mechanical room shall be located and installed in accordance with the average net floor area of the unit. The above net floor area shall be determined in accordance with Section 1802. The combination for duct shall be installed in accordance with Section 1802. The combination for duct shall be installed in accordance with Section 1802. The combination for duct shall be installed in accordance with Section 1802.
- 6. Tubework, combi per spec sheet
- 7. FINISH UNDERSIDE OF STAIRS WITH 1/2" GYP. BD. PAINTED
- 8. Single compartment sink
- 9. Single compartment sink
- 10. 38" refrigerator space
- 11. 38" refrigerator space
- 12. Electrical panel, 125A service
- 13. Electrical panel, 125A service
- 14. Garage floor, 2" thick, 4" deep
- 15. Line of factory above
- 16. Line of factory above



1 Level 1 - Rear
 1/4" = 1'-0"



4 Level 1 - Front
 1/4" = 1'-0"



2 Level 2
 1/4" = 1'-0"

Area Schedule (Gross Building)	
Name	Area
Level 1 - Rear	421 SF
Level 1 - Front	29 SF
Level 2	896 SF
Level 2 Balcony	84 SF
Level 3 Balcony	38 SF
Level 3 Balcony	38 SF
Grand Total	247 SF

- Window Note:**
- 1. No windows are allowed in specified firewalls.
 - 2. Units shown are typical building units, with window placements shown for all possible configurations.
 - 3. 5 are middle units with firewalls at both adjoining sides.
 - 4. Units 1 and 4 are required to have firewalls at both sides of each unit.



URBAN

C.W.

THIS DOCUMENT IS UNCLASSIFIED. IT IS THE PROPERTY OF THE ARCHITECT AND IS TO BE RETURNED TO HIM OR HER UPON COMPLETION OF THE PROJECT. IT IS NOT TO BE REPRODUCED OR TRANSMITTED IN ANY FORM OR BY ANY MEANS, ELECTRONIC OR MECHANICAL, INCLUDING PHOTOCOPYING, RECORDING, OR BY ANY INFORMATION STORAGE AND RETRIEVAL SYSTEM.

PROJECT: THE MABEL
 323 S. 700 E. SOFT LAKE CITY, UTAH 84101

REVISIONS

TITLE: FLOOR PLANS - END UNITS

SHEET

A111

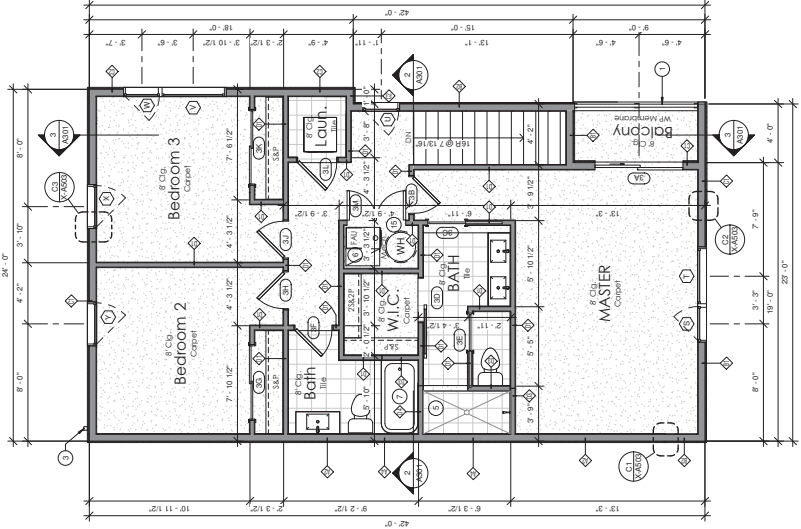
ISSUE DATE: 08/20/17
 PD APPLICATION

GENERAL NOTES - FLOOR PLAN

- NO WINDOWS ARE ALLOWED IN SPECIFIED FIREWALLS.
- ALL WINDOW PLACEMENTS MUST BE SHOWN WITH WINDOW FRAME TYPES SHOWN FOR ALL POSSIBLE CONFIGURATIONS.
- ALL WINDOW PLACEMENTS MUST BE SHOWN WITH WINDOW ACCESSORIES, MELLWORK, AND EQUIPMENT AS REQUIRED.

FLOOR PLAN KEYNOTES

- 3/8" guardrail per spec sheet
- Concrete landing
- 3/8" rebar
- (1) 1/2" x 4" rebar grade - rebar 5/8" type 3, 90° bend on walls, and 2 layers of 5/8" type 3 on ceiling - all joints to be lap spliced
- Mechanical rooms and closets shall be finished in accordance with the envelope requirements of the International Building Code (IBC) and the International Mechanical Code (IMC). The floor in the room shall be finished with a minimum of 1/2" concrete and shall be finished with a minimum of 1/2" concrete and shall be finished with a minimum of 1/2" concrete.
- FINISH UNDERSESS OF STAIRS WITH 1/2" GYP. BO. PAINTED
- Free-standing range
- 3/8" refrigerator
- 3/8" high rise counter
- 3/8" high rise counter - USA window
- 24 gauge pan with drain
- Line of balcony above



Window Note:

- No windows are allowed in specified firewalls.
- Window placements shown are for all possible configurations.
- Units 2, 3, 4 & 5 are middle units with firewalls at both ends.
- Units 1 and 6 are required to have firewalls at both sides of each unit.

Area Schedule (Gross Building)

Name	Area
Level 1 - Balr	421 SF
Level 1 - Front +	28 SF
Level 2	896 SF
Level 2 Balcony	88 SF
Level 3	848 SF
Level 3 Balcony	26 SF
Grand total: 6	2417 SF

1 Level 3
 1/8" = 1'-0"

